

Statfjord FLX - The Journey to Sirius - a Light Weight Pulling Unit

Matthew King
Project Manager - SFA PP&A
Equinor FLX
05th June 2025

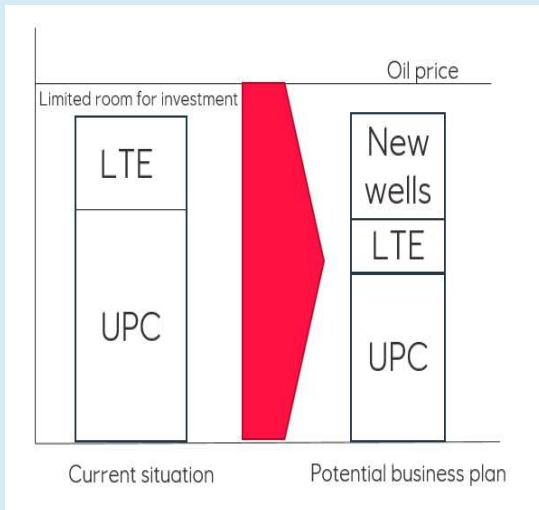


Equinor FLX | Light house for the future on the NCS

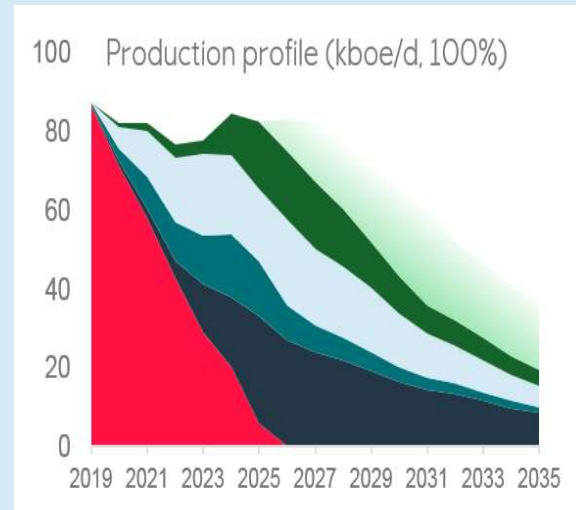
FLX – Field Life Extension



Creating room for investments



... prolong economical lifetime



FLX Mandate

The FLX Mandate graphic features three red icons on the left: a heart with a pulse line, a drop, and a person climbing. To the right of these icons are three lines of text: 'Zero Harm', 'Maximize production and reduce cost', and 'Future ways of working'. On the far right, there is a white line drawing of a lighthouse beam illuminating a path that leads up a hill, with a small 'A' at the start of the path.

P&A Scope of work

The Statfjord P&A strategy is to set 3* plugs in each well to permanently abandon the accessible wellbores.

Open-hole-to-surface (OHTS) plug:

- Objective is to cover shallow sands and protect the environment from well fluids

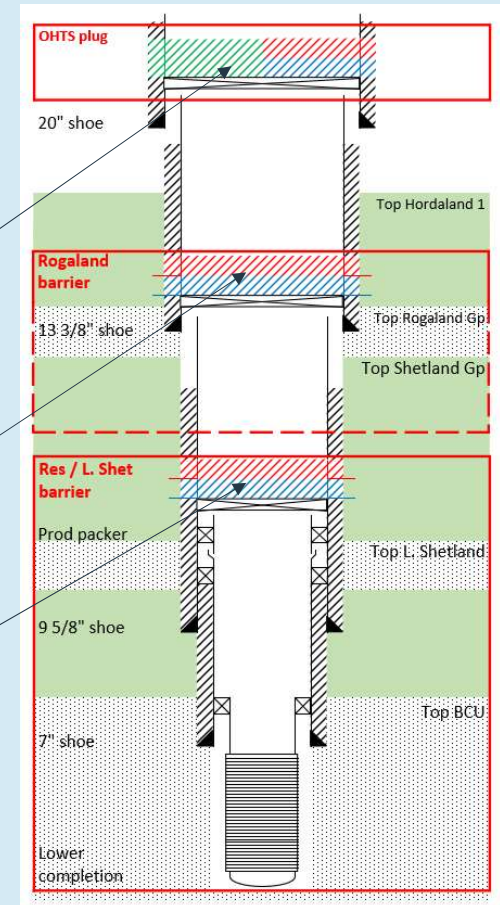
Rogaland barrier plug:

- Objective is to permanently P&A the Rogaland Gp. (Balder and Lista Fm's) and the Upper Shetland Fm., where applicable

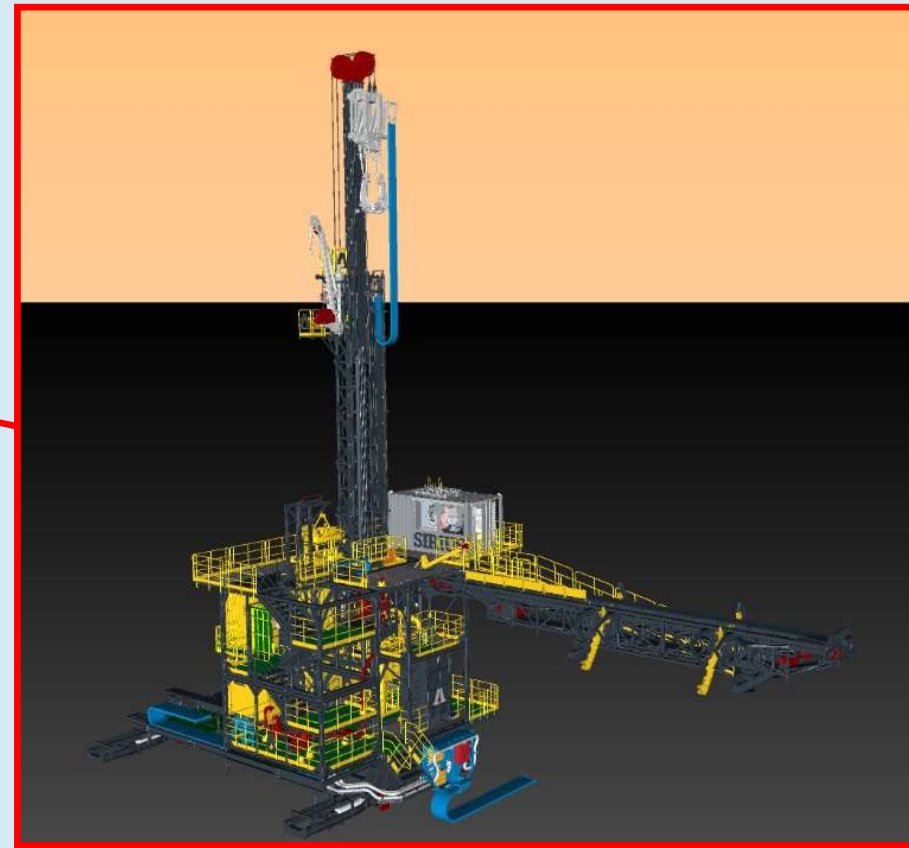
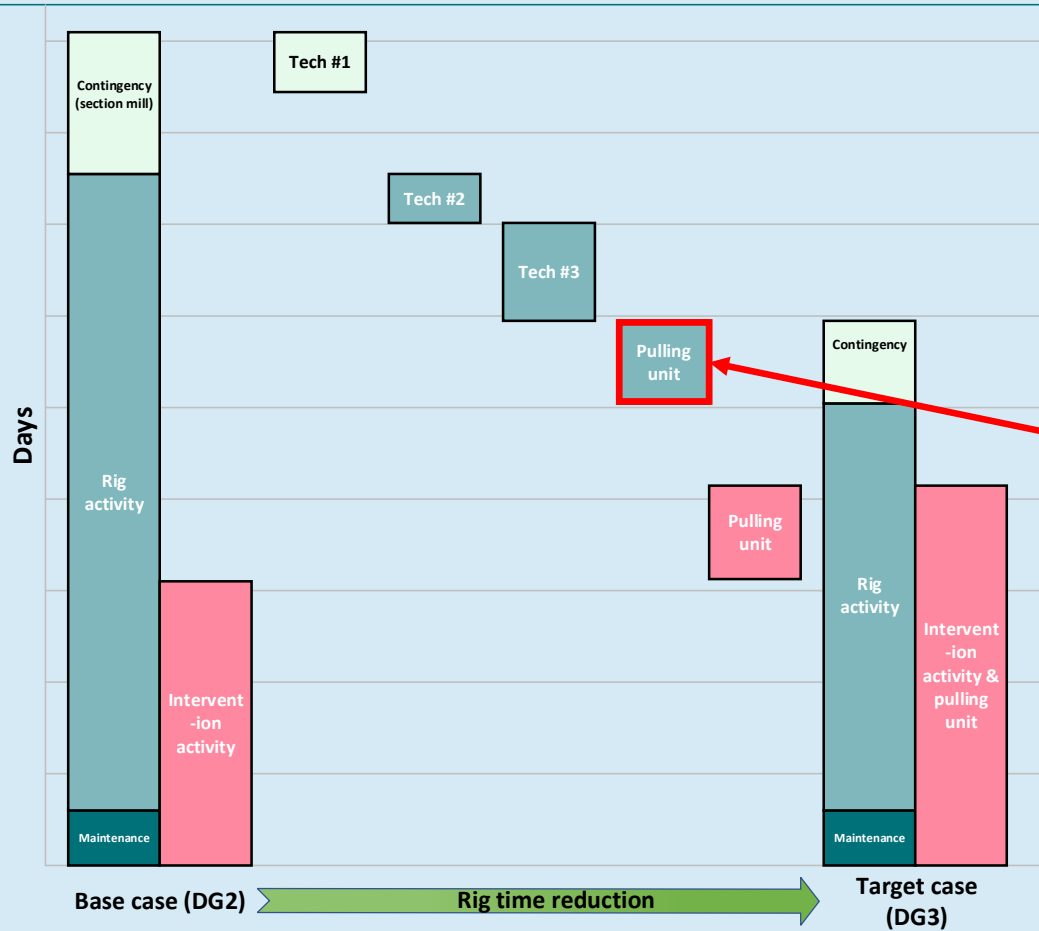
Reservoir / Lower Shetland barrier plug:

- Objective is to permanently P&A the reservoir formations and Lower Shetland

**Note: On an individual well basis, additional lateral barriers ("risk-reducing" barriers) have been recommended to improve the abandonment status for several of the old inaccessible wellbores*

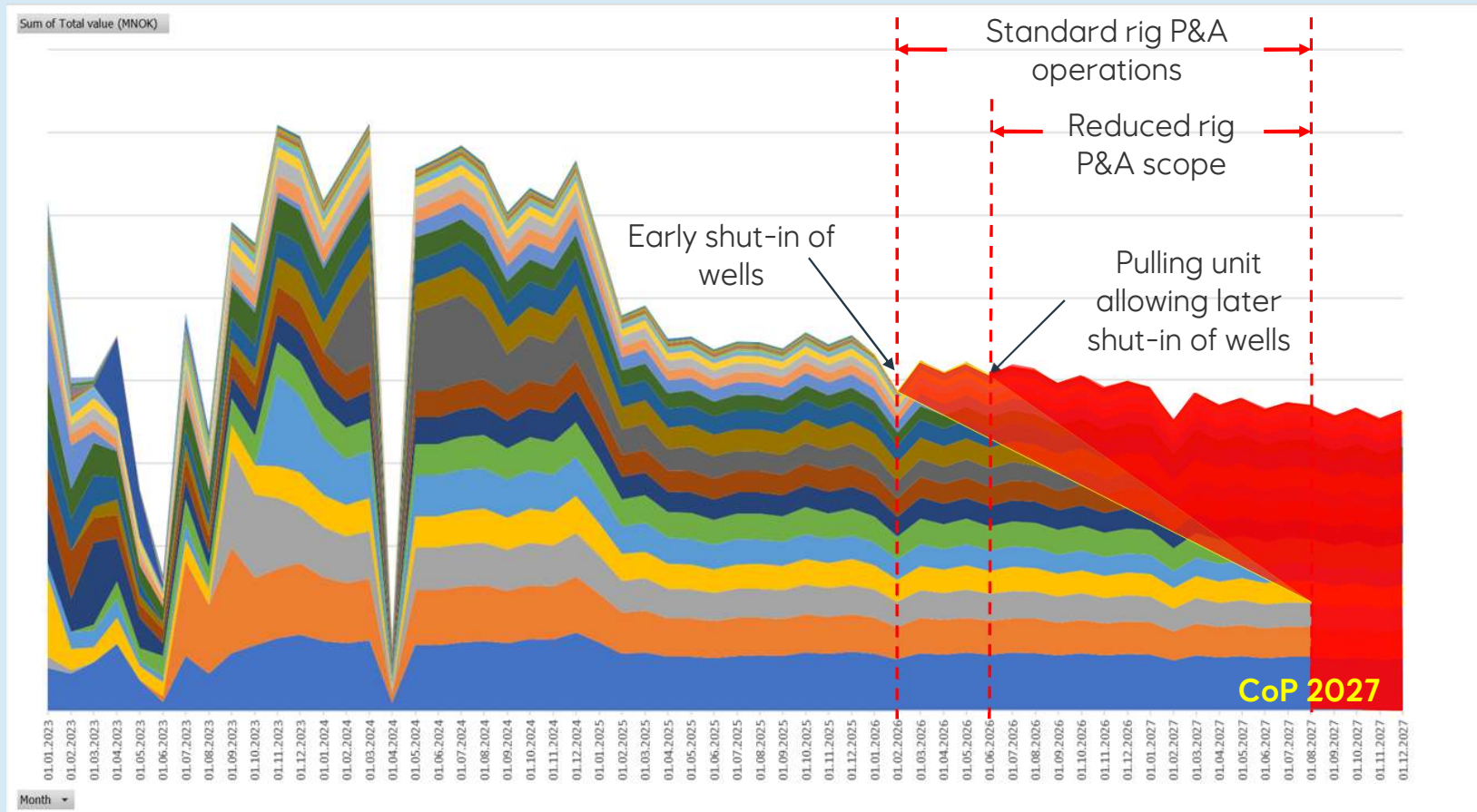


How can we improve?

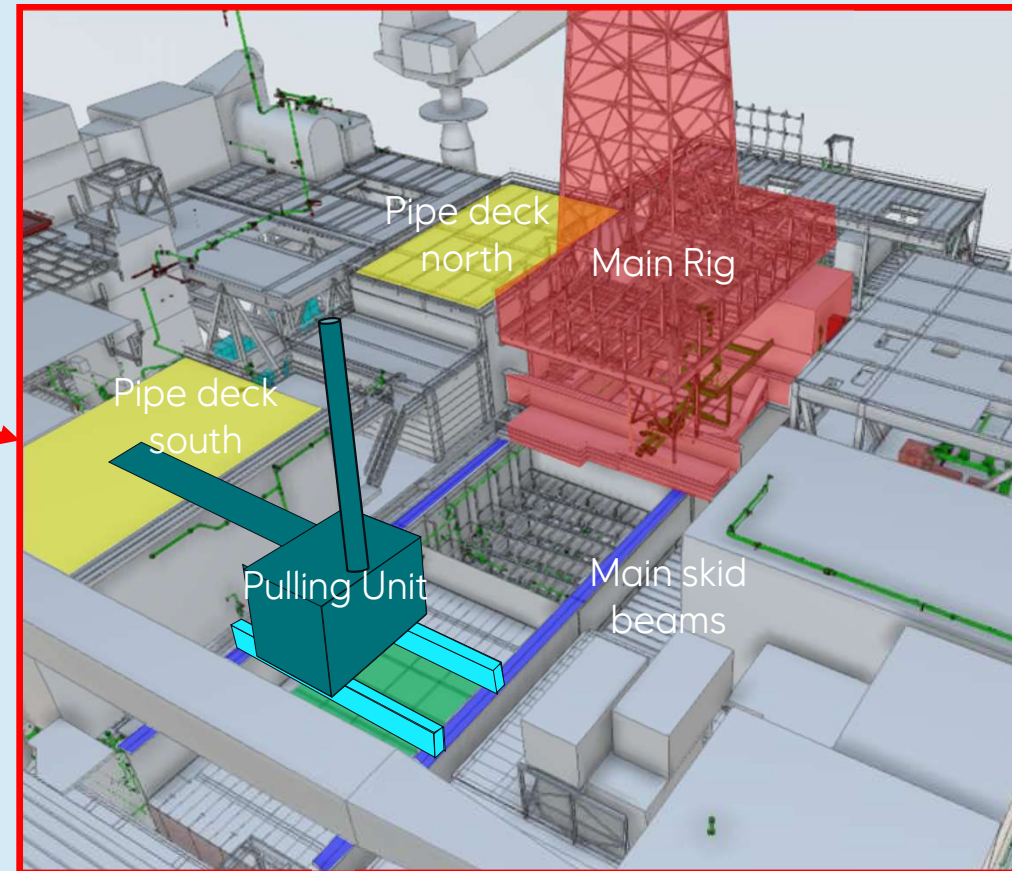
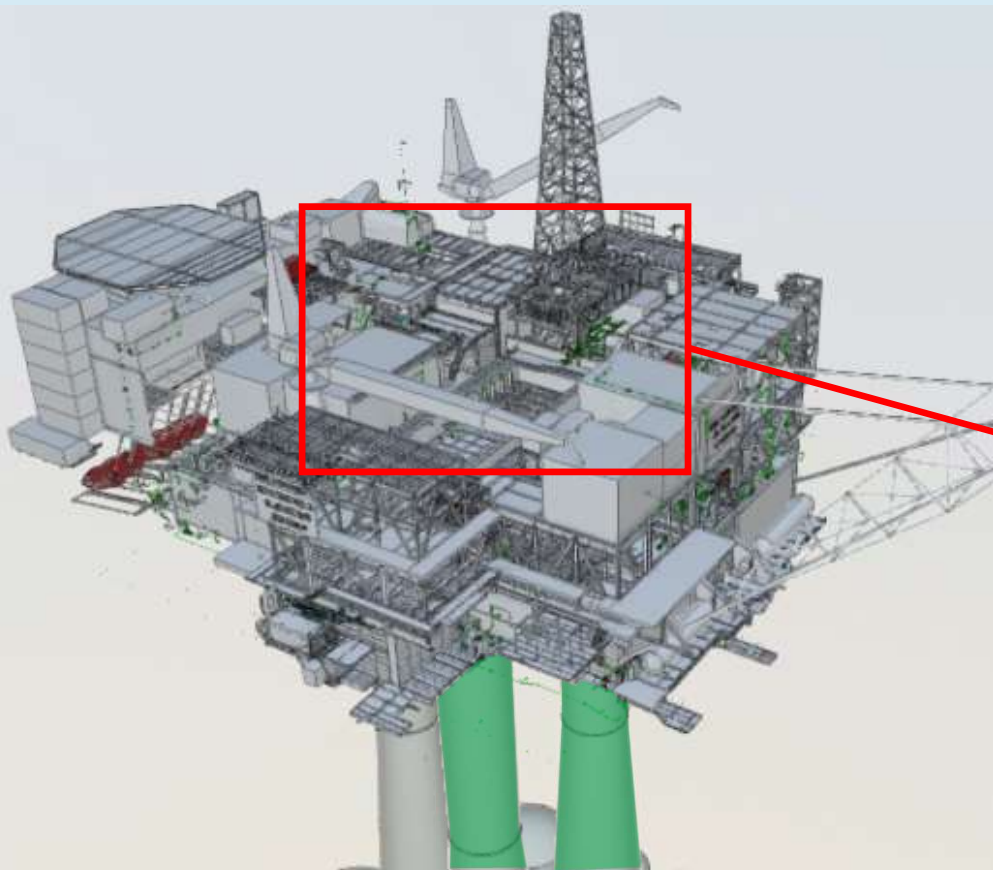


Pulling unit

Creating Value in PP&A



Why a Pulling Unit?



Equinor FLX | Light house for the future on the NCS



What is a light weight pulling unit?



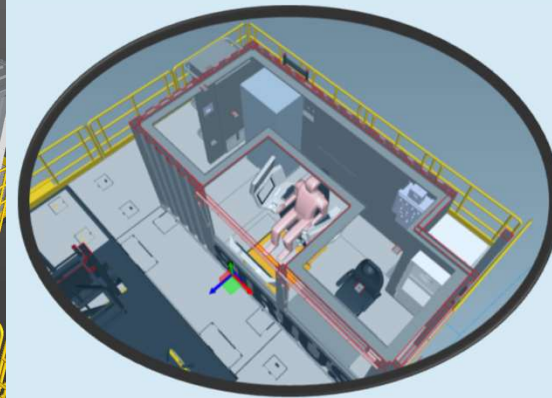
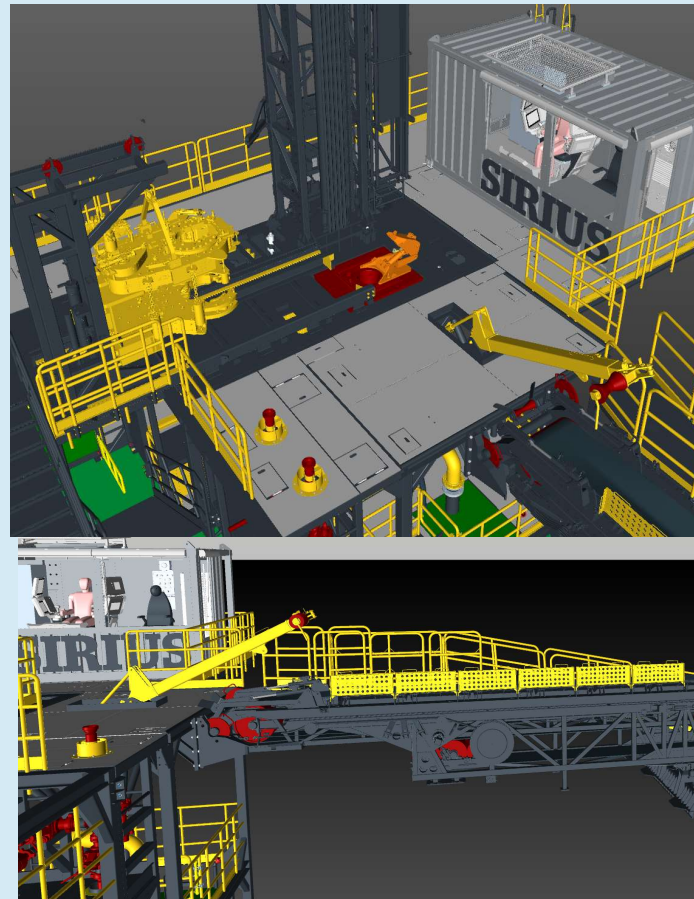
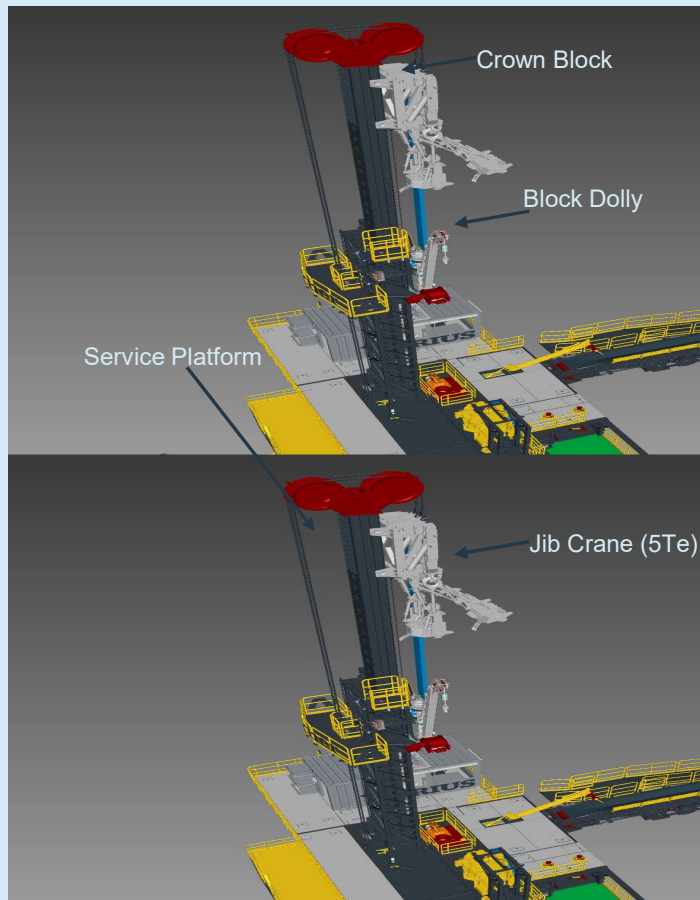
	Pulling Unit
Max Lifting Capacity	150 tons
Lifting Height	16 meters
Lifting Mechanism	Hydraulic Cylinder
Weight	150 tons
Number of modules	19
Pump Capacity	> 1200 lpm
Max Tubular Size	7 5/8"
Topdrive?	No
Pulling Speed	> 15 m / minute
Total Power	> 500kW
Moveable between Platforms?	Yes
Personnel (per shift)	5 (inc. Supervisor)
Fully Automated Pipe Handling?	Yes
Drillpipe Racking?	No
Working Winches	1 (5 tons)

Equinor FLX - Safe and efficient operations

Open

05 June 2025

Key Aspects

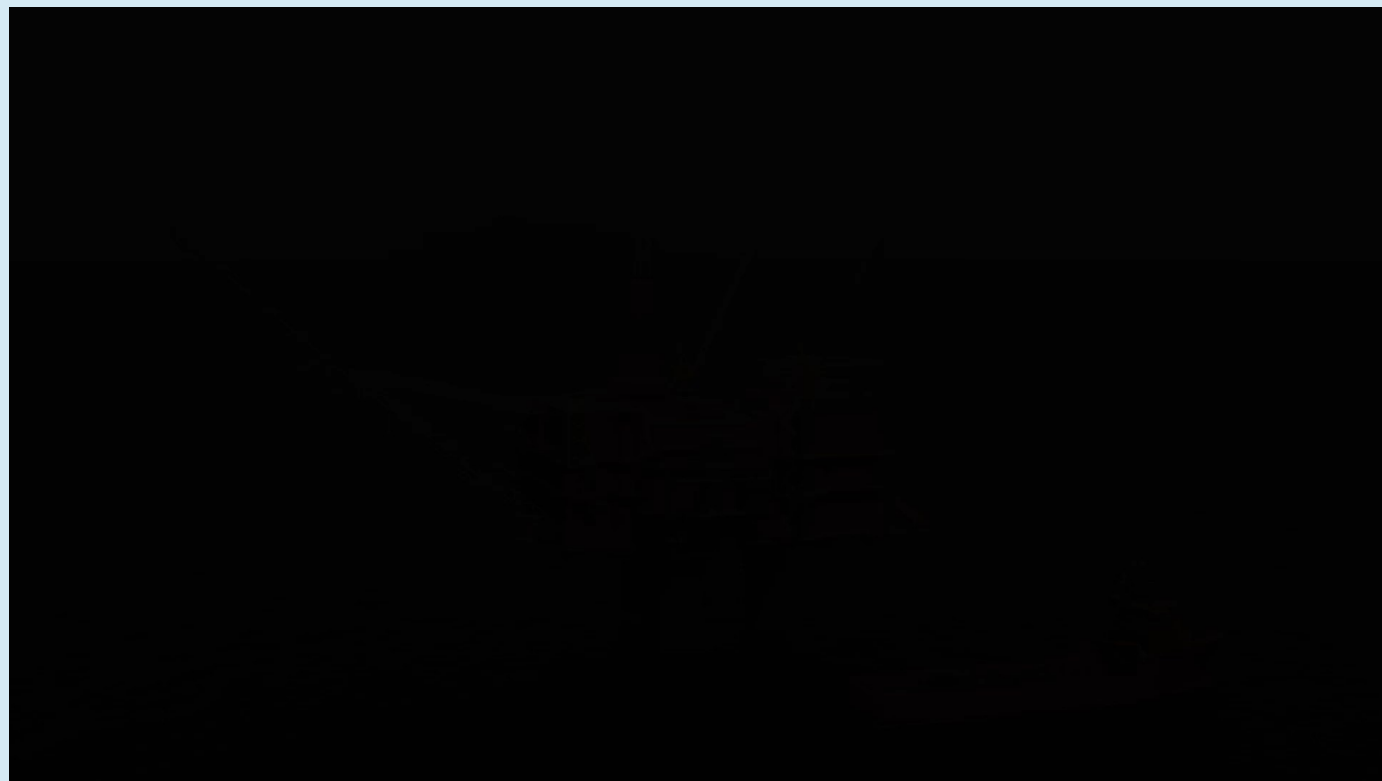


Driller Control Cabin

Equinor FLX | Light house for the future on the NCS



Mobilisation Offshore



Statfjord FLX - The Journey to Sirius - a Light Weight Pulling Unit

Matthew King
SFA PP&A Project Manager
makin@equinor.com

© Equinor ASA

This presentation, including the contents and arrangement of the contents of each individual page or the collection of the pages, is owned by Equinor. Copyright to all material including, but not limited to, written material, photographs, drawings, images, tables and data remains the property of Equinor. All rights reserved. Any other use, reproduction, translation, adaption, arrangement, alteration, distribution or storage of this presentation, in whole or in part, without the prior written permission of Equinor is prohibited. The information contained in this presentation may not be accurate, up to date or applicable to the circumstances of any particular case, despite our efforts. Equinor cannot accept any liability for any inaccuracies or omissions.

