

NORWEGIAN PETROLEUM  
DIRECTORATE

# Monthly Production from NCS 2020 compared with prognosis and 2019

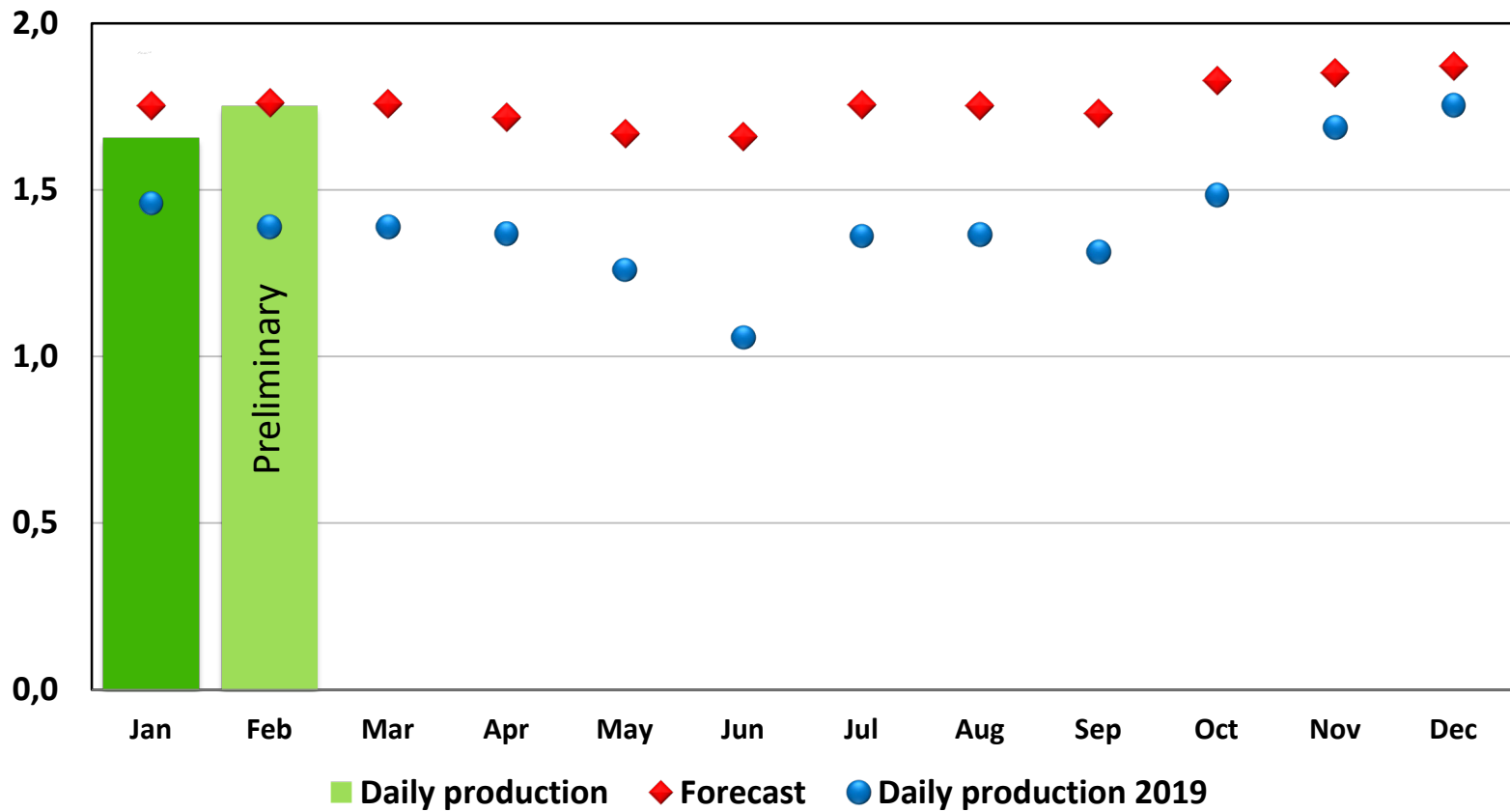
Updated to February

# Production February 2020

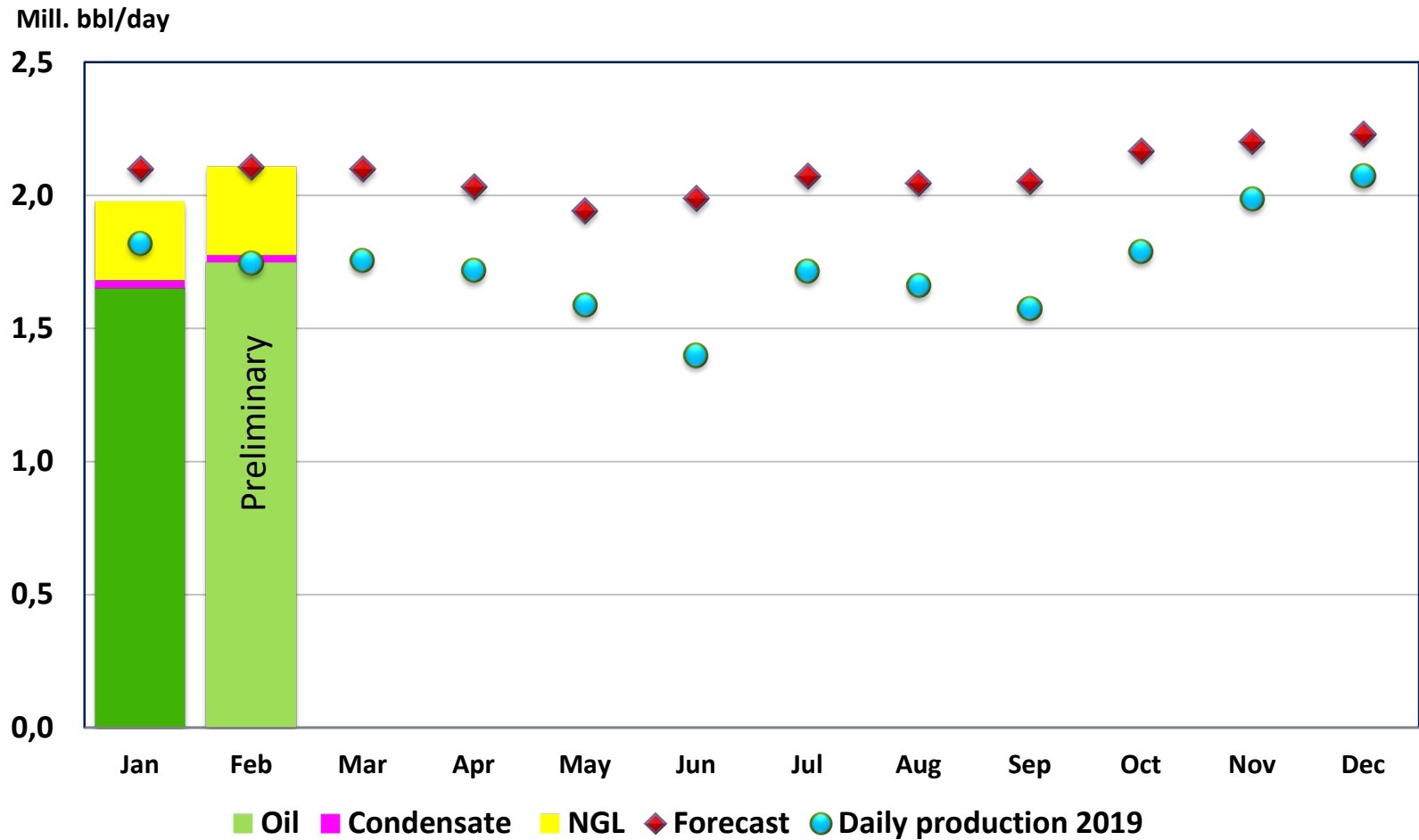
		Oil	Sum liquid	Gas	Total
		mill bbl/d	mill bbl/d	MSm <sup>3</sup> /d	MSm <sup>3</sup> o.e/d
<b>Production</b>	<b>February 2020</b>	<b>1,749</b>	<b>2,106</b>	<b>343,5</b>	<b>0,703</b>
Forecast for	February 2020	1,761	2,107	341,2	0,676
Deviation from forecast		-0,012	-0,001	2,3	0,027
Deviation from forecast in %		-0,7 %	0,0 %	0,7 %	4,0 %
Production	January 2020	1,653	1,977	338,2	0,653
Deviation from	January 2020	0,096	0,129	5,3	0,050
Deviation in % from	January 2020	5,8 %	6,5 %	1,6 %	7,7 %
Production	February 2019	1,389	1,746	361,5	0,639
Deviation from	February 2019	0,360	0,360	-18,0	0,064
Deviation in % from	February 2019	25,9 %	20,6 %	-5,0 %	10,0 %

# Oil production 2020

Mill. bbl/day



# Liquid production 2020



# Gas production 2020

Mill. Sm<sup>3</sup>/day

