

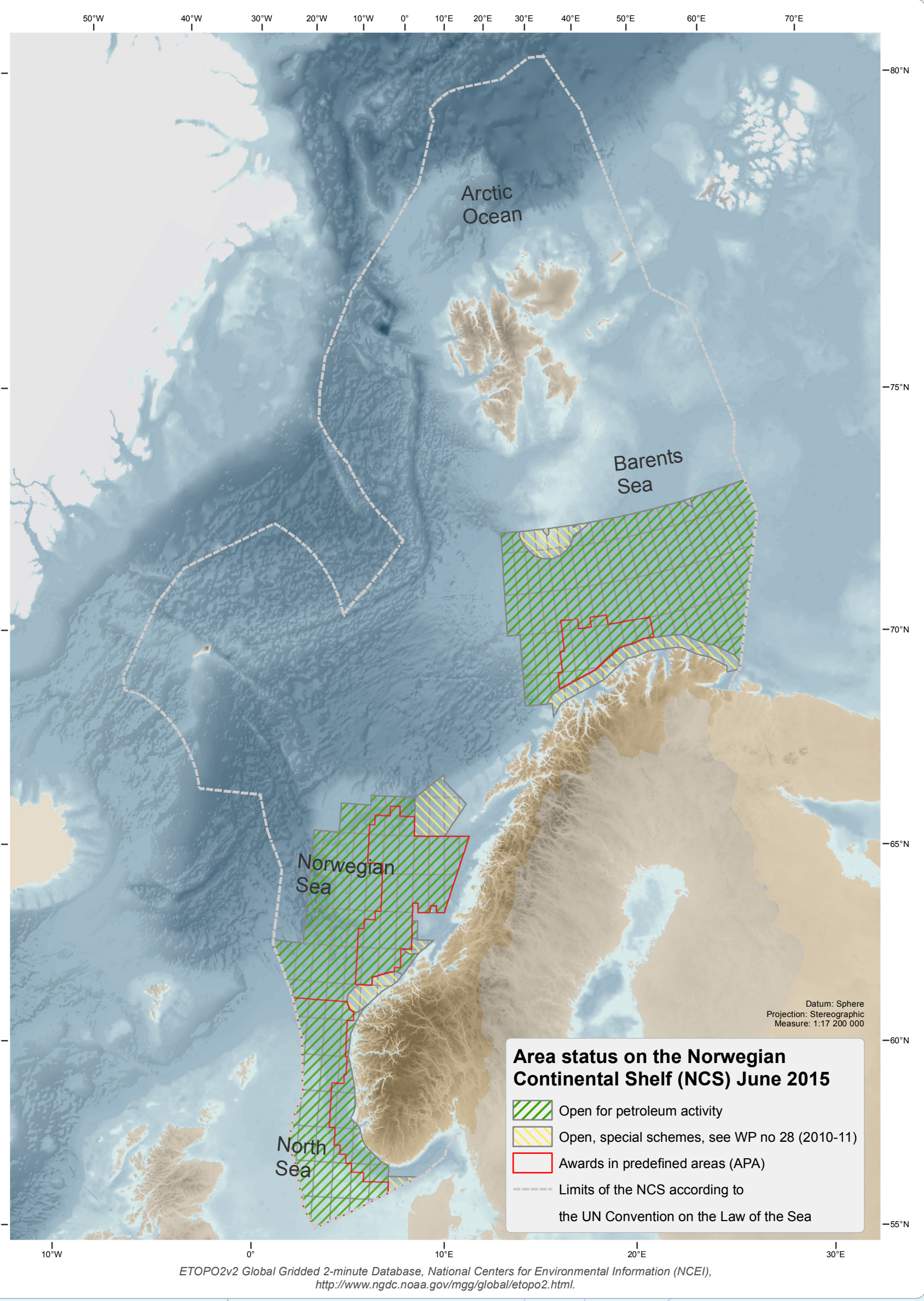
Den norske kontinentalsokkelen

Oppdaterte fakta er tilgjengelige via www.npd.no og OD sine Faktasider og Faktakart. Sjekk også ut nettstedet www.norskpetroleum.no og appen Oil Facts, som begge tilbyr tilrettede fakta om norsk petroleumsvirksomhet.

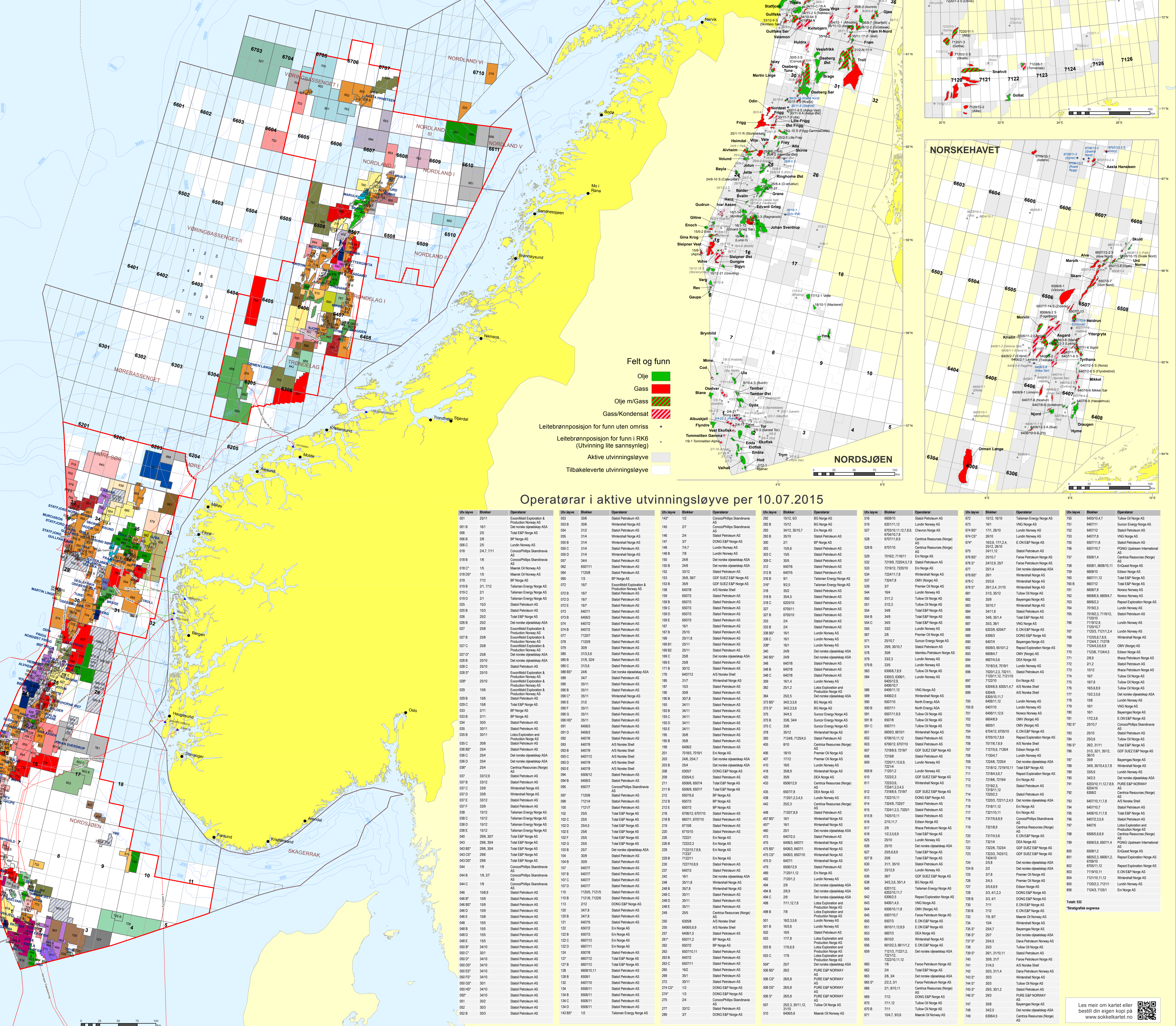


Teiknforklaring hovedkart

- Operatorar**
 - Bayergas
 - BG
 - BP
 - Centrica Resources
 - Chevron
 - ConocoPhillips
 - Dana Petroleum
 - DEA Norge AS
 - Det norske oljeselskap
 - E.ON E&P
 - Edison Norge AS
 - Eni
 - EnQuest Norge AS
 - ExxonMobil E&P
 - Faroe Petroleum
 - GDF SUEZ E&P
 - Idemitsu Petroleum
 - Ithaca Petroleum
 - Lotos E&P
 - Lundin
 - Maersk Oil
 - Noreco
 - North Energy
 - OMV
 - PGNIG
 - Premier Oil
 - PURE E&P Norway AS
 - Repsol Exploration
 - Shell
 - Statoil Petroleum
 - Suncor Energy
 - Talisman Energy
 - Total E&P
 - Tullow Oil
 - VNG
 - Wintershall
 - Områdeavgrensning**
 - TFO-område*
 - Subområde
 - Transportsystem**
 - Olje
 - Gass
 - Olje/gass
 - Kondensat
- Hovedkart:** Datum: ED60, CM: 19 Ø
Målestokk 1:1950000
- *TFO: Tilsjette i forbindelse med områder



ETOPO2v2 Global Gridded 2-minute Database, National Centers for Environmental Information (NCEI), <http://www.ngdc.noaa.gov/gloabl/etopo2.html>



Operatorar i aktive utvinningsløyve per 10.07.2015

Utløyvsnr	Blokk	Operator	Utløyvsnr	Blokk	Operator	Utløyvsnr	Blokk	Operator	Utløyvsnr	Blokk	Operator	Utløyvsnr	Blokk	Operator
001	1511	ExxonMobil Exploration & Production Norway AS	003	308	Statoil Petroleum AS	005	1512, 1610	Statoil Petroleum AS	007	1512, 1610	Talisman Energy Norge AS	009	44517, 47	Tullow Oil Norge AS
001 B	161	Det norske oljeselskap AS	003 B	308	Wintershall Norge AS	005 B	1512	Statoil Petroleum AS	007 B	1512	VNG Norge AS	009 B	44517, 47	Suncor Energy Norge AS
002	312	Det norske oljeselskap AS	003 C	312	Statoil Petroleum AS	005 C	1512, 1610	Eni Norge AS	007 C	1512, 1610	Centrica Resources Norge AS	009 C	44517, 47	VNG Norge AS
002 B	312	BP Norge AS	003 D	312	Wintershall Norge AS	005 D	312	Statoil Petroleum AS	007 D	312	Statoil Petroleum AS	009 D	44517, 47	Statoil Petroleum AS
002 C	25	Lundin Norge AS	003 E	314	Wintershall Norge AS	005 E	148, 147	Lundin Norge AS	007 E	148, 147	Statoil Petroleum AS	009 E	44517, 47	Statoil Petroleum AS
002 D	1512	Statoil Petroleum AS	003 F	314	Wintershall Norge AS	005 F	148, 148	Wintershall Norge AS	007 F	148, 148	Statoil Petroleum AS	009 F	44517, 47	Statoil Petroleum AS
002 E	15	Maersk Oil Norway AS	003 G	314	Wintershall Norge AS	005 G	148, 148	Wintershall Norge AS	007 G	148, 148	Statoil Petroleum AS	009 G	44517, 47	Statoil Petroleum AS
002 F	15	Maersk Oil Norway AS	003 H	314	Wintershall Norge AS	005 H	148, 148	Wintershall Norge AS	007 H	148, 148	Statoil Petroleum AS	009 H	44517, 47	Statoil Petroleum AS
002 G	15	Maersk Oil Norway AS	003 I	314	Wintershall Norge AS	005 I	148, 148	Wintershall Norge AS	007 I	148, 148	Statoil Petroleum AS	009 I	44517, 47	Statoil Petroleum AS
002 H	15	Maersk Oil Norway AS	003 J	314	Wintershall Norge AS	005 J	148, 148	Wintershall Norge AS	007 J	148, 148	Statoil Petroleum AS	009 J	44517, 47	Statoil Petroleum AS
002 I	15	Maersk Oil Norway AS	003 K	314	Wintershall Norge AS	005 K	148, 148	Wintershall Norge AS	007 K	148, 148	Statoil Petroleum AS	009 K	44517, 47	Statoil Petroleum AS
002 J	15	Maersk Oil Norway AS	003 L	314	Wintershall Norge AS	005 L	148, 148	Wintershall Norge AS	007 L	148, 148	Statoil Petroleum AS	009 L	44517, 47	Statoil Petroleum AS
002 K	15	Maersk Oil Norway AS	003 M	314	Wintershall Norge AS	005 M	148, 148	Wintershall Norge AS	007 M	148, 148	Statoil Petroleum AS	009 M	44517, 47	Statoil Petroleum AS
002 L	15	Maersk Oil Norway AS	003 N	314	Wintershall Norge AS	005 N	148, 148	Wintershall Norge AS	007 N	148, 148	Statoil Petroleum AS	009 N	44517, 47	Statoil Petroleum AS
002 M	15	Maersk Oil Norway AS	003 O	314	Wintershall Norge AS	005 O	148, 148	Wintershall Norge AS	007 O	148, 148	Statoil Petroleum AS	009 O	44517, 47	Statoil Petroleum AS
002 N	15	Maersk Oil Norway AS	003 P	314	Wintershall Norge AS	005 P	148, 148	Wintershall Norge AS	007 P	148, 148	Statoil Petroleum AS	009 P	44517, 47	Statoil Petroleum AS
002 O	15	Maersk Oil Norway AS	003 Q	314	Wintershall Norge AS	005 Q	148, 148	Wintershall Norge AS	007 Q	148, 148	Statoil Petroleum AS	009 Q	44517, 47	Statoil Petroleum AS
002 P	15	Maersk Oil Norway AS	003 R	314	Wintershall Norge AS	005 R	148, 148	Wintershall Norge AS	007 R	148, 148	Statoil Petroleum AS	009 R	44517, 47	Statoil Petroleum AS
002 Q	15	Maersk Oil Norway AS	003 S	314	Wintershall Norge AS	005 S	148, 148	Wintershall Norge AS	007 S	148, 148	Statoil Petroleum AS	009 S	44517, 47	Statoil Petroleum AS
002 R	15	Maersk Oil Norway AS	003 T	314	Wintershall Norge AS	005 T	148, 148	Wintershall Norge AS	007 T	148, 148	Statoil Petroleum AS	009 T	44517, 47	Statoil Petroleum AS
002 S	15	Maersk Oil Norway AS	003 U	314	Wintershall Norge AS	005 U	148, 148	Wintershall Norge AS	007 U	148, 148	Statoil Petroleum AS	009 U	44517, 47	Statoil Petroleum AS
002 T	15	Maersk Oil Norway AS	003 V	314	Wintershall Norge AS	005 V	148, 148	Wintershall Norge AS	007 V	148, 148	Statoil Petroleum AS	009 V	44517, 47	Statoil Petroleum AS
002 U	15	Maersk Oil Norway AS	003 W	314	Wintershall Norge AS	005 W	148, 148	Wintershall Norge AS	007 W	148, 148	Statoil Petroleum AS	009 W	44517, 47	Statoil Petroleum AS
002 V	15	Maersk Oil Norway AS	003 X	314	Wintershall Norge AS	005 X	148, 148	Wintershall Norge AS	007 X	148, 148	Statoil Petroleum AS	009 X	44517, 47	Statoil Petroleum AS
002 W	15	Maersk Oil Norway AS	003 Y	314	Wintershall Norge AS	005 Y	148, 148	Wintershall Norge AS	007 Y	148, 148	Statoil Petroleum AS	009 Y	44517, 47	Statoil Petroleum AS
002 X	15	Maersk Oil Norway AS	003 Z	314	Wintershall Norge AS	005 Z	148, 148	Wintershall Norge AS	007 Z	148, 148	Statoil Petroleum AS	009 Z	44517, 47	Statoil Petroleum AS
002 Y	15	Maersk Oil Norway AS	003 AA	314	Wintershall Norge AS	005 AA	148, 148	Wintershall Norge AS	007 AA	148, 148	Statoil Petroleum AS	009 AA	44517, 47	Statoil Petroleum AS
002 Z	15	Maersk Oil Norway AS	003 AB	314	Wintershall Norge AS	005 AB	148, 148	Wintershall Norge AS	007 AB	148, 148	Statoil Petroleum AS	009 AB	44517, 47	Statoil Petroleum AS
002 AA	15	Maersk Oil Norway AS	003 AC	314	Wintershall Norge AS	005 AC	148, 148	Wintershall Norge AS	007 AC	148, 148	Statoil Petroleum AS	009 AC	44517, 47	Statoil Petroleum AS
002 AB	15	Maersk Oil Norway AS	003 AD	314	Wintershall Norge AS	005 AD	148, 148	Wintershall Norge AS	007 AD	148, 148	Statoil Petroleum AS	009 AD	44517, 47	Statoil Petroleum AS
002 AC	15	Maersk Oil Norway AS	003 AE	314	Wintershall Norge AS	005 AE	148, 148	Wintershall Norge AS	007 AE	148, 148	Statoil Petroleum AS	009 AE	44517, 47	Statoil Petroleum AS
002 AD	15	Maersk Oil Norway AS	003 AF	314	Wintershall Norge AS	005 AF	148, 148	Wintershall Norge AS	007 AF	148, 148	Statoil Petroleum AS	009 AF	44517, 47	Statoil Petroleum AS
002 AE	15	Maersk Oil Norway AS	003 AG	314	Wintershall Norge AS	005 AG	148, 148	Wintershall Norge AS	007 AG	148, 148	Statoil Petroleum AS	009 AG	44517, 47	Statoil Petroleum AS
002 AF	15	Maersk Oil Norway AS	003 AH	314	Wintershall Norge AS	005 AH	148, 148	Wintershall Norge AS	007 AH	148, 148	Statoil Petroleum AS	009 AH	44517, 47	Statoil Petroleum AS
002 AG	15	Maersk Oil Norway AS	003 AI	314	Wintershall Norge AS	005 AI	148, 148	Wintershall Norge AS	007 AI	148, 148	Statoil Petroleum AS	009 AI	44517, 47	Statoil Petroleum AS
002 AH	15	Maersk Oil Norway AS	003 AJ	314	Wintershall Norge AS	005 AJ	148, 148	Wintershall Norge AS	007 AJ	148, 148	Statoil Petroleum AS	009 AJ	44517, 47	Statoil Petroleum AS
002 AI	15	Maersk Oil Norway AS	003 AK	314	Wintershall Norge AS	005 AK	148, 148	Wintershall Norge AS	007 AK	148, 148	Statoil Petroleum AS	009 AK	44517, 47	Statoil Petroleum AS
002 AJ	15	Maersk Oil Norway AS	003 AL	314	Wintershall Norge AS	005 AL	148, 148	Wintershall Norge AS	007 AL	148, 148	Statoil Petroleum AS	009 AL	44517, 47	Statoil Petroleum AS
002 AK	15	Maersk Oil Norway AS	003 AM	314	Wintershall Norge AS	005 AM	148, 148	Wintershall Norge AS	007 AM	148, 148	Statoil Petroleum AS	009 AM	44517, 47	Statoil Petroleum AS
002 AL	15	Maersk Oil Norway AS	003 AN	314	Wintershall Norge AS	005 AN	148, 148	Wintershall Norge AS	007 AN	148, 148	Statoil Petroleum AS	009 AN	44517, 47	Statoil Petroleum AS
002 AM	15	Maersk Oil Norway AS	003 AO	314	Wintershall Norge AS	005 AO	148, 148	Wintershall Norge AS	007 AO	148, 148	Statoil Petroleum AS	009 AO	44517, 47	Statoil Petroleum AS
002 AN	15	Maersk Oil Norway AS	003 AP	314	Wintershall Norge AS	005 AP	148, 148	Wintershall Norge AS	007 AP	148, 148	Statoil Petroleum AS	009 AP	44517, 47	Statoil Petroleum AS
002 AO	15	Maersk Oil Norway AS	003 AQ	314	Wintershall Norge AS	005 AQ	148, 148	Wintershall Norge AS	007 AQ	148, 148	Statoil Petroleum AS	009 AQ	44517, 47	Statoil Petroleum AS
002 AP	15	Maersk Oil Norway AS	003 AR	314	Wintershall Norge AS	005 AR	148, 148	Wintershall Norge AS	007 AR	148, 148	Statoil Petroleum AS	009 AR	44517, 47	Statoil Petroleum AS
002 AQ	15	Maersk Oil Norway AS	003 AS	314	Wintershall Norge AS	005 AS	148, 148	Wintershall Norge AS	007 AS	148, 148	Statoil Petroleum AS	009 AS	44517, 47	Statoil Petroleum AS
002 AR	15	Maersk Oil Norway AS	003 AT	314	Wintershall Norge AS	005 AT	148, 148	Wintershall Norge AS	007 AT	148, 148	Statoil Petroleum AS	009 AT	44517, 47	Statoil Petroleum AS
002 AS	15	Maersk Oil Norway AS	003 AU	314	Wintershall Norge AS	005 AU	148, 148	Wintershall Norge AS	007 AU	148, 148	Statoil Petroleum AS	009 AU	44517, 47	Statoil Petroleum AS
002 AT	15	Maersk Oil Norway AS	003 AV	314	Wintershall Norge AS	005 AV	148, 148	Wintershall Norge AS	007 AV	148, 148	Statoil Petroleum AS	009 AV	44517, 47	Statoil Petroleum AS
002 AU	15	Maersk Oil Norway AS	003 AW	314	Wintershall Norge AS	005 AW	148, 148	Wintershall Norge AS	007 AW	148, 148	Statoil Petroleum AS	009 AW	44517, 47	Statoil Petroleum AS
002 AV	15	Maersk Oil Norway AS	003 AX	314	Wintershall Norge AS	005 AX	148, 148	Wintershall Norge AS	007 AX	148, 148	Statoil Petroleum AS	009 AX	44517, 47	Statoil Petroleum AS
002 AW	15	Maersk Oil Norway AS	003 AY	314	Wintershall Norge AS	005 AY	148, 148	Wintershall Norge AS	007 AY	148, 148	Statoil Petroleum AS	009 AY	44517, 47	Statoil Petroleum AS
002 AX	15	Maersk Oil Norway AS	003 AZ	314	Wintershall Norge AS	005 AZ	148, 148	Wintershall Norge AS	007 AZ	148, 148	Statoil Petroleum AS	009 AZ	44517, 47	Statoil Petroleum AS
002 AY	15	Maersk Oil Norway AS	003 BA	314	Wintershall Norge AS	005 BA	148, 148	Wintershall Norge AS	007 BA	148, 148	Statoil Petroleum AS	009 BA	44517, 47	Statoil Petroleum AS
002 AZ	15	Maersk Oil Norway AS	003 BB	314	Wintershall Norge AS	005 BB	148, 148	Wintershall Norge AS	007 BB	148, 148	Statoil Petroleum AS	009 BB	44517, 47	Statoil Petroleum AS
002 BA	15	Maersk Oil Norway AS	003 BC	314	Wintershall Norge AS	005 BC	148, 148	Wintershall Norge AS	007 BC	148, 148	Statoil Petroleum AS	009 BC	44517, 47	Statoil Petroleum AS
002 BB	15	Maersk Oil Norway AS	003 BD	314	Wintershall Norge AS	005 BD	148, 148	Wintershall Norge AS	007 BD	148, 148	Statoil Petroleum AS	009 BD	44517, 47	Statoil Petroleum AS
002 BC	15	Maersk Oil Norway AS	003 BE	314	Wintershall Norge AS	005 BE	148, 148	Wintershall Norge AS	007 BE	148, 148	Statoil Petroleum AS	009 BE	44517, 47	Statoil Petroleum AS
002 BD	15	Maersk Oil Norway AS	003 BF	314	Wintershall Norge AS	005 BF	148, 148	Wintershall Norge AS	007 BF	148, 148	Statoil Petroleum AS	009 BF	44517, 47	Statoil Petroleum AS
002 BE	15	Maersk Oil Norway AS	003 BG	314	Wintershall Norge AS	005 BG	148, 148	Wintershall Norge AS	007 BG	148, 148	Statoil Petroleum AS	009 BG	44517, 47	Statoil Petroleum AS
002 BF	15	Maersk Oil Norway AS	003 BH	314	Wintershall Norge AS	005 BH	148, 148	Wintershall Norge AS	007 BH	148, 148	Statoil Petroleum AS	009 BH	44517, 47	Statoil Petroleum AS
002 BG	15	Maersk Oil Norway AS	003 BI	314	Wintershall Norge AS	005 BI	148, 148	Wintershall Norge AS	007 BI	148, 148	Statoil Petroleum AS	009 BI	44517, 47	Statoil Petroleum AS
002 BH	15	Maersk Oil Norway AS	003 BJ	314	Wintershall Norge AS	005 BJ	148, 148	Wintershall Norge AS	007 BJ	148, 148	Statoil Petroleum AS	009 BJ	44517, 47	Statoil Petroleum AS
002 BI	15	Maersk Oil Norway AS	003 BK	314	Wintershall Norge AS	005 BK	148, 148	Wintershall Norge AS	007 BK	148, 148	Statoil Petroleum AS	009 BK	44517	